



# 20 points of interest in Platåbergens Geopark

---

A travel in time through 1,700 million years  
– sights that tell the history of Earth.







A PIECE OF EARTH'S HISTORY

## A JOURNEY IN TIME THROUGH 1700 MILLION YEARS

Geology is history – Earth's history. By visiting geological sites in the table mountain landscape, you can travel in time – several million years. Each place is a piece of the puzzle, which together tells a story that begins 1700 million years ago. From ancient mountain ranges, via shallow tropical seas, to volcanic eruptions and ice ages. The puzzle pieces are out there, in the landscape. Do you want to discover them and join our journey through time?



Photo: Jesper Anheide



EARTH BRINGS LIFE

## THE FIRST COMMUNITIES

What did the mountains and the soil mean to the first people in the table mountain landscape? Megalith graves, large Viking farms, monasteries, kings, bloody battles and Swedish crusaders. The area of the table mountain landscape has been the scene for important events in Swedish history. The fertile soil and the mountains led people to build large farms and communities which thrived here.



Photo: John Olsson





Photo: Kinnekulle Hembygdsförening



ROCKS FOR A LIVING

## THE HUMANS AND THE MOUNTAINS AS RESOURCES

Quarries, lime burning, millstone mines, stonemasonries – the people of the table mountain landscape have always had an economic and emotional connection to the mountains. Without the mountains it would have been impossible to build one of Sweden's oldest stone churches, in Varnhem. Without the mountains the monks would never have started the production of millstones in Lugnås. The mountains have been, and still are, an important resource.

Photo: Jesper Arhede



THE MOUNTAINS ARE ALIVE

## NATURE AND THE OUTDOORS TODAY

Orchids in the alvar soil. Deer in the fields. Deciduous forests on the slopes. Pilgrim falcons on high. Cranes dancing on the plains. Cultural relics in the forests. They are all around us, whether we are on foot, cycling or by the lake, whether we live here or are just visiting. How do you live with the mountains?

## Welcome to Platåbergens Geopark

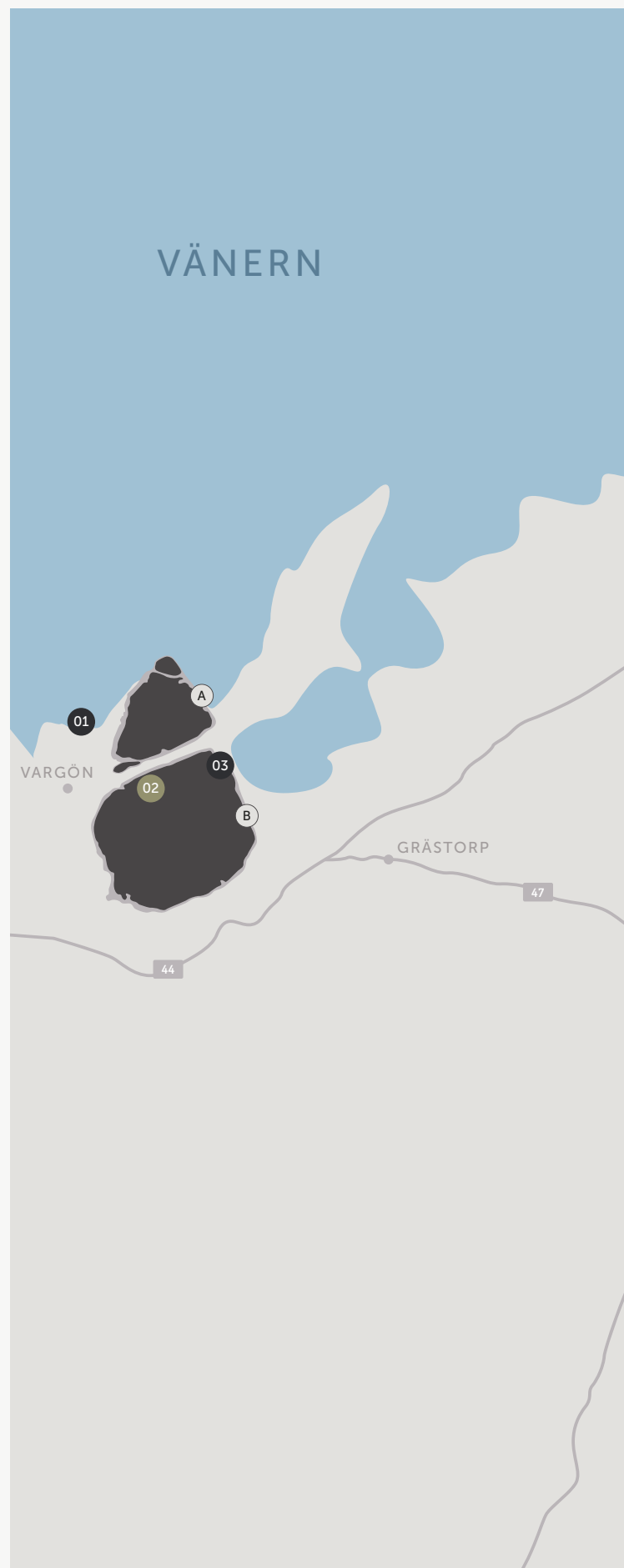
A geopark is an area where the geology is of international importance – something that's unique in the world. The table mountain landscape in west Sweden has that. Here you find 15 table mountains, but also the peneplain - the bedrock surface on which the table mountains rest - and the Quaternary geological deposits from the ice age and a rich cultural history.

A geopark actively works to showcase and disseminate knowledge about geology and geological sites. An important part is that you constantly show and talk about the connections between geology and biology, and between geology, people and cultural history. The table mountains will help to create a common identity in the area and give the local people an increased pride in their region.

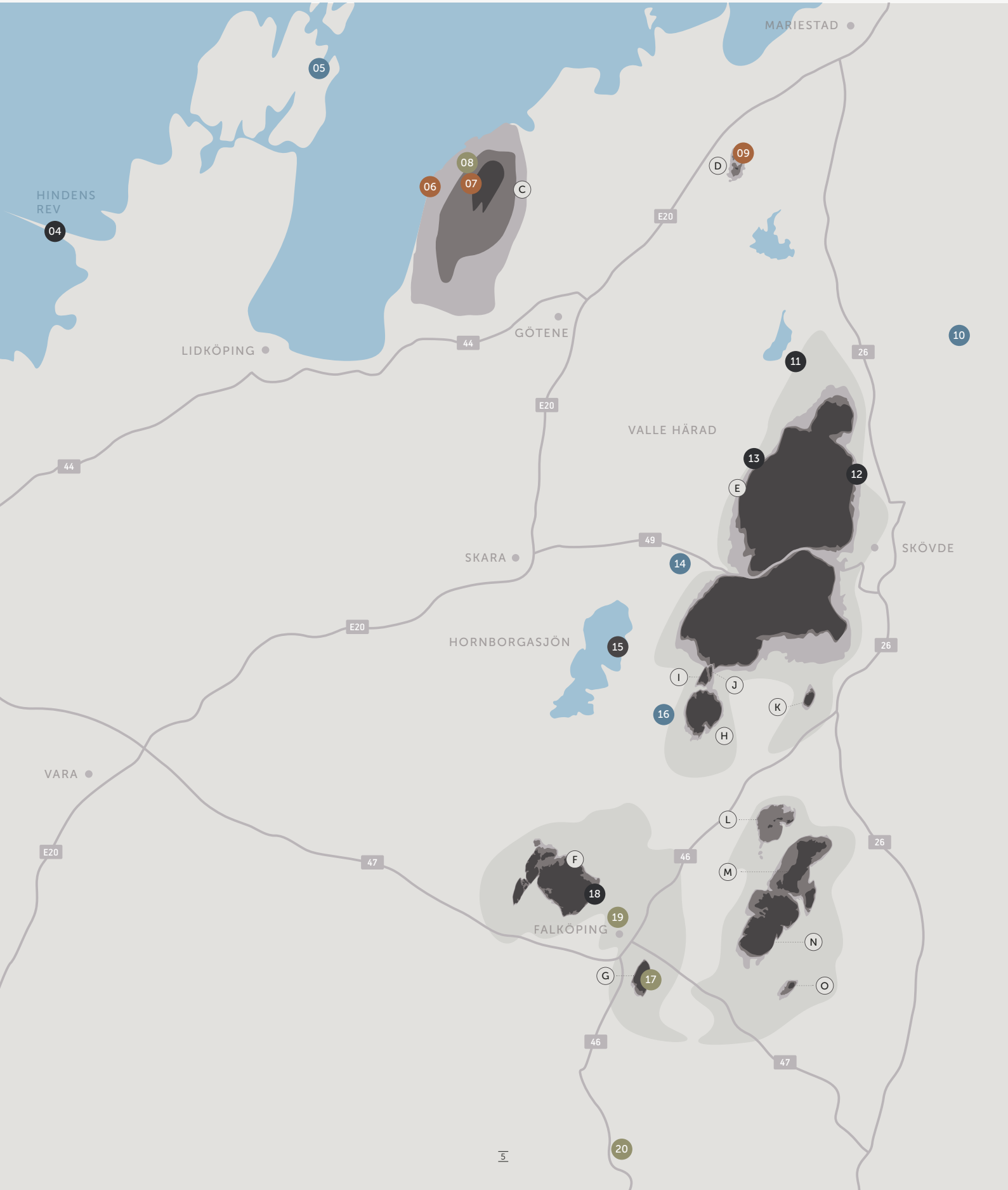
Platåbergens Geopark aims to establish Sweden's first UNESCO Global Geopark. The area of the geopark covers nine municipalities: Trollhättan, Vänersborg, Grästorp, Lidköping, Götene, Skara, Mariestad, Skövde and Falköping. Status as a UNESCO Global Geopark is a mark of quality and demonstrates that the natural and cultural environments around us deserve international recognition.

### THE TABLE MOUNTAINS OF VÄSTERGÖTLAND

- A. Halleberg (Trollhättan, Vänersborg, Grästorp)
- B. Hunneberg (Trollhättan, Vänersborg, Grästorp)
- C. Kinnekulle (Götene)
- D. Lugnåsberget (Mariestad)
- E. Billingen (Skövde, Skara)
- F. Mösseberg (Falköping)
- G. Ålleberg (Falköping)
- H. Brunnhemsberget (Falköping, Skövde)
- I. Tovaberget (Falköping, Skövde)
- J. Myggeberget (Falköping, Skövde)
- K. Borgundaberget (Skövde, Falköping)
- L. Plantaberget (Falköping, Tidaholm)
- M. Varvsberget (Falköping, Tidaholm)
- N. Gerumsberget (Falköping, Tidaholm)
- O. Gisseberget (Tidaholm)











01

### THE PENEPLAIN AT NORDKROKEN

– Sweden's oldest landscape

Vargön  
58°23'11.2"N 12°24'27.9"E



06

### RÅBÄCKS MEKANISKA STENHUGGERI

– Industrial museum of the year, 2018

Kinneulle  
58°36'23.1"N 13°20'50.1"E

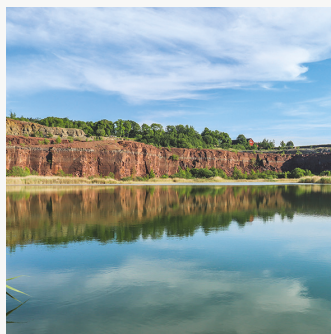


02

### THE ROYAL HUNT MUSEUM – ELK HILL

– A museum dedicated to the mountains

Hunneberg  
58°20'51.6"N 12°25'54.2"E

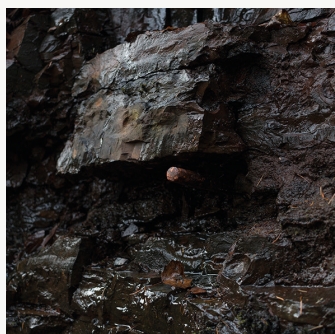


07

### THE LARGE QUARRY ON KINNEKULLE

– Götene's "mini Grand Canyon"

Kinneulle  
58°36'36.6"N 13°23'26.9"E

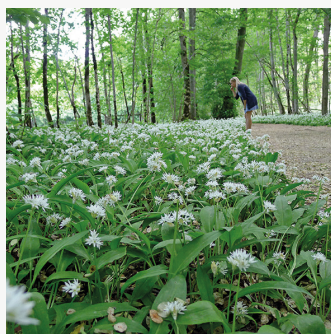


03

### GYLLENE SPIKEN

– A geological reference point

Hunneberg  
58°21'45.9"N 12°29'52.2"E

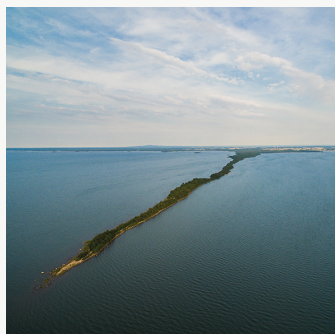


08

### MUNKÄNGARNA NATURE RESERVE

– A paradise for nature lovers and photographers

Kinneulle  
58°36'45.2"N 13°23'06.4"E



04

### HINDENS REV

– When the ice age came to an end

Lidköping  
58°34'24.6"N 12°54'46.0"E



09

### THE MILLSTONE QUARRY AT LUGNÅS

– A visit beneath the mountain

Lugnåsberget  
58°37'32.5"N 13°43'57.5"E

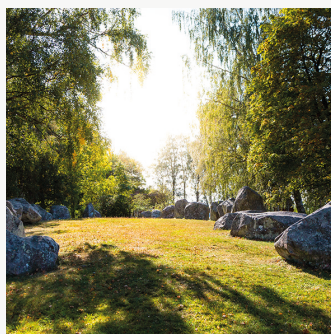


05

### KÅLLANDSÖ AND LÄCKÖ CASTLE

– Baroque castle by lake Vänern

Lidköping  
58°40'36.3"N 13°13'11.9"E



10

### ASKEBERGA SKEPPSSÄTTNING

– Giant stone blocks in a powerful formation

Tidan  
58°34'32.2"N 13°59'02.9"E





11

### SILVERFALLET

– 60-metre-high waterfall

Karlsfors  
58°29'34.7"N 13°44'41.7"E



16

### EKORNAVALLEN

– Ancient remains from the three eras

Broddetorp  
58°16'44.1"N 13°36'15.1"E



12

### RYD CAVES

– Diabase pillars and spectacular views

Skövde  
58°25'51.7"N 13°49'20.6"E



17

### ÅLLEBERG

– Our highest table mountain

Falköping  
58°08'13.2"N 13°36'04.5"E



13

### VALLE HÄRAD

– A diverse and rolling landscape

Skövde/Skara  
58°26'53.1"N 13°42'39.4"E

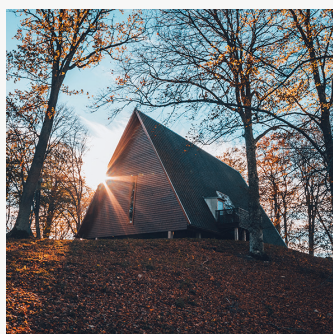


18

### MÖSSEBERG'S VIEWPOINT

– The Eiffel Tower of Västgötaslätten

Falköping  
58°11'04.3"N 13°32'28.5"E



14

### KATA GÅRD

– The story of the Christian Vikings

Varnhem  
58°23'00.4"N 13°39'22.7"E



19

### FALBYGDENS MUSEUM

– The rich cultural heritage of Falbygden

Falköping  
58°10'07.0"N 13°33'09.9"E



15

### HORNBORGASJÖN

– The great bird lake

Broddetorp  
58°19'27.8"N 13°35'13.8"E



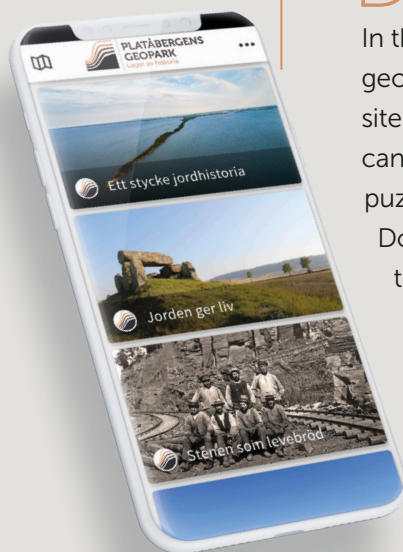
20

### EKEHAGENS PREHISTORIC VILLAGE

– Welcome to Ekehagen Prehistoric Village

Åsarp  
58°01'56.2"N 13°33'27.0"E





Discover Platåbergens Geopark and learn more about planet Earth's exiting history. In the app you find more than 100 sites of geological interest. By visiting geological sites in the table mountain landscape, you can travel in time – several million years. The puzzle pieces are out there, in the landscape. Do you want to discover them and join the travel through time?

Scan to  
download  
the app



This folder is produced with fundings from:

Åse Viste  
Sparbank



Swedbank



Sparbanksstiftelsen  
Alfa



The European Agricultural Fund  
for Rural Development:  
Europe investing in rural areas



**PLATÅBERGENS  
GEOPARK**  
Layers of history

[www.platabergensgeopark.com](http://www.platabergensgeopark.com)  
facebook & instagram: @platabergensgeopark